

## CARATTERISTICHE TECNICHE

Dimensioni massime ingombro (cm)	47 x 69 x h 143
Peso (kg)	480
Volume riscaldamento (mc)	120 ÷ 150
Portina (cm)	23,5 x 23,5 nera
Piedini (cm)	-
Basamento (cm)	h 20 nera
Colori	-
Maiolica	glatt rustico
Scarico fumi (Ø cm)	12
Forno cottura (largh, x prof. x h cm)	a richiesta
Regolazione automatica aria combustione	-



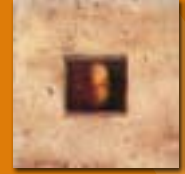
Cotto verde



Cotto verde con vetro



Noce

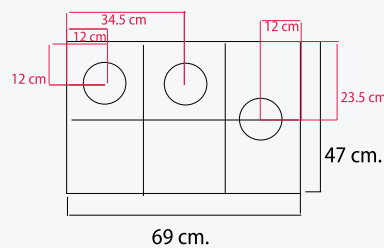
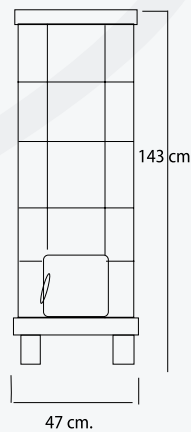


Noce con vetro

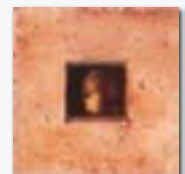
GAMMA COLORI  
ACQUERELLO

MODELLO

## Rustica 22



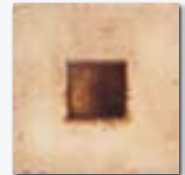
Cotto



Cotto con vetro



Light



Light con vetro



Blu aviazione



Blu aviazione con vetro

